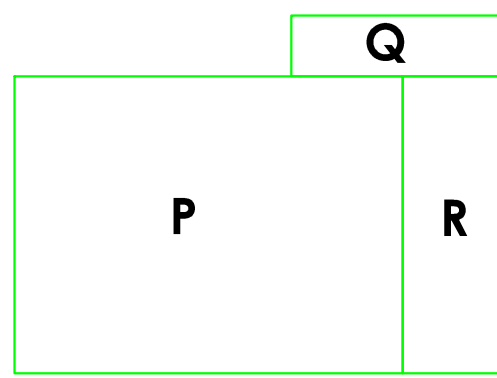


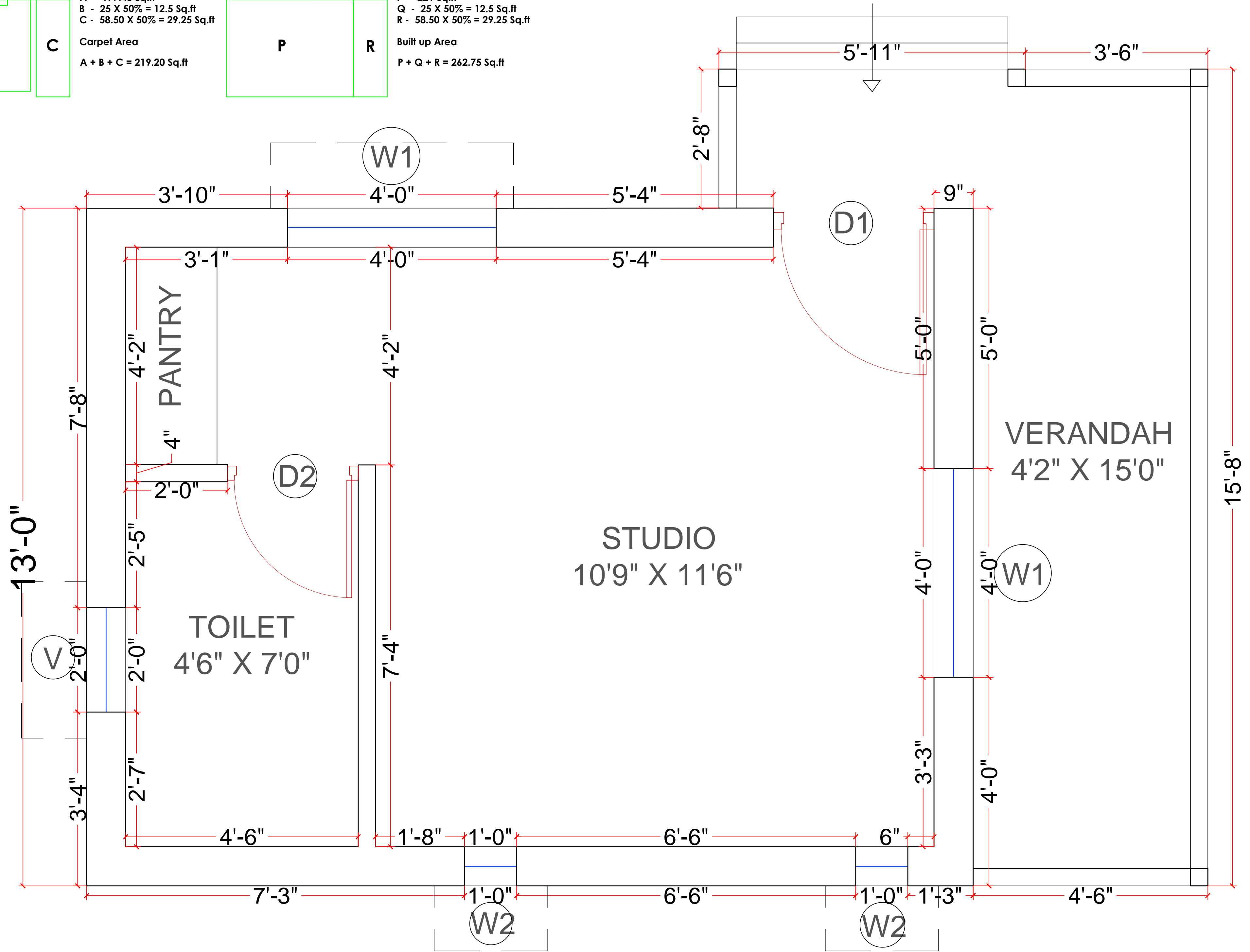
**CARPET AREA**  
 A - 177.45 Sq.ft  
 B - 25 X 50% = 12.5 Sq.ft  
 C - 58.50 X 50% = 29.25 Sq.ft

**Carpet Area**  
 A + B + C = 219.20 Sq.ft



**BUILT UP AREA**  
 P - 221 Sq.ft  
 Q - 25 X 50% = 12.5 Sq.ft  
 R - 58.50 X 50% = 29.25 Sq.ft

**Built up Area**  
 P + Q + R = 262.75 Sq.ft



**DIMENSION LAYOUT**